



## Product Information Sheet

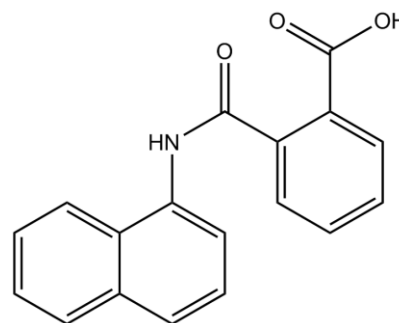
**N6250**

### **N-1-naphthylphthalamic acid (NPA)**

Synonyms: NPA, Naptalam  
CAS: 132-66-1  
Formula: C<sub>18</sub>H<sub>13</sub>NO<sub>3</sub>  
Mol. Weight: 291.3 g/mol

#### **Properties**

Form: Solid  
Appearance: N/A  
Application: Polar auxin-transport inhibitor  
Solubility: 200 mg/L in DMSO  
Storage Temp: Room temperature



Typical Working Concentration: Varies by application. Concentration should be determined by end user.

#### **Application Notes**

Synthetic polar auxin transport inhibitors block auxin efflux out of the cell through interfering with PIN1 efflux carrier proteins which take auxin from endosomal compartments to the plasma membrane, thus causing net accumulation of auxin within the cell.

Please Note: While *PhytoTechnology Laboratories™* tests each lot of this product with two or more plant cell/ tissue culture lines, it is the sole responsibility of the purchaser to determine the appropriateness of this product for the specific plants that are being cultured and applications that are being used.

#### **References**

Merck, 13 6444  
Casimiro *et al.* (2001) *The Plant Cell* Vol 13, pg 843-852.  
Geldner *et al.* (2001) *Nature* Vol 413, pg 425-428  
Jensen *et al.* (1998) *Plant Physiology* Vol 116 pg 455-462